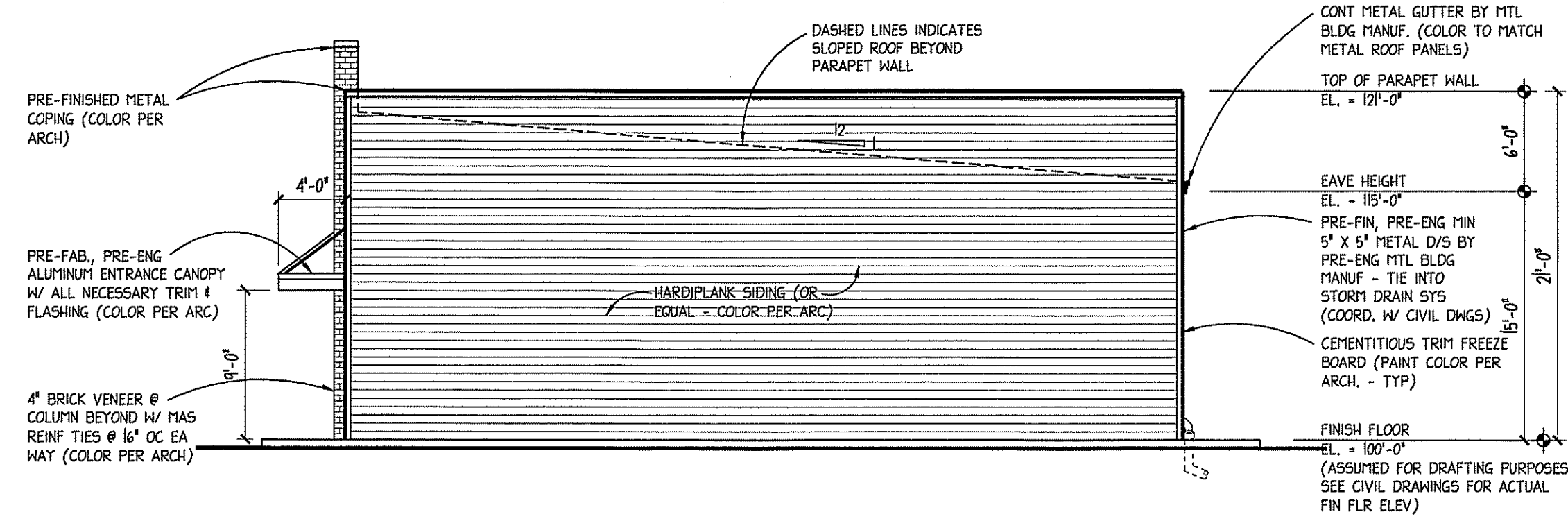
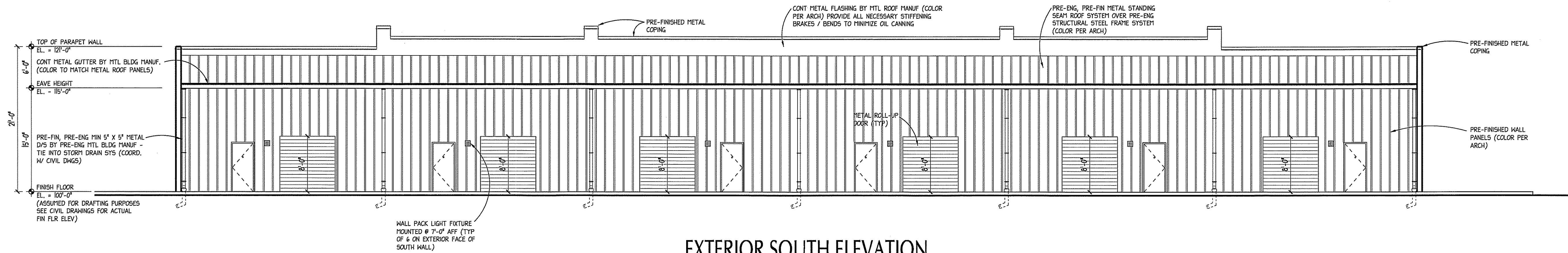


ANY MODIFICATIONS TO THESE PLANS OR RE-USE OF THESE PLANS MUST BE APPROVED BY AND SIGNED BY THE ARCHITECT.



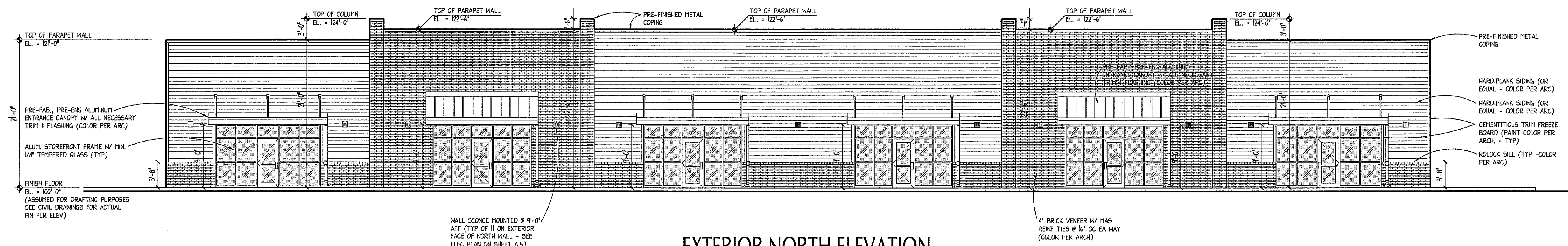
EXTERIOR WEST ELEVATION

1/8" = '1-0"
(East Elev is Sim. OpP)



EXTERIOR SOUTH ELEVATION

1/8" = '1-0"



EXTERIOR NORTH ELEVATION

1/8" = '1-0"

DRAWN BY: J.M.A.
DATE: JAN 18, 2010
PROJECT NO: 08-04

PAUL STRESING ASSOCIATES, INC.

14817 MAIN STREET
ALABAMA PRACREGISTRATION
E-MAIL: paul@stresing.com
TELEPHONE: (336) 462-6407 FAX: (336) 462-6409
REGISTRATION NO. AR0003985 - CA NO. AA0003377

UPLAND PROPERTY OF NORTH CENTRAL FLORIDA LLC

PROPOSED

PROTOTYPE WAREHOUSE / OFFICE BUILDING

GAINESVILLE, FLORIDA

REVISIONS	DATE	ARCHITECT'S SEAL

LIC. NO. AR0013985

SHEET NO.

A.5

OF X