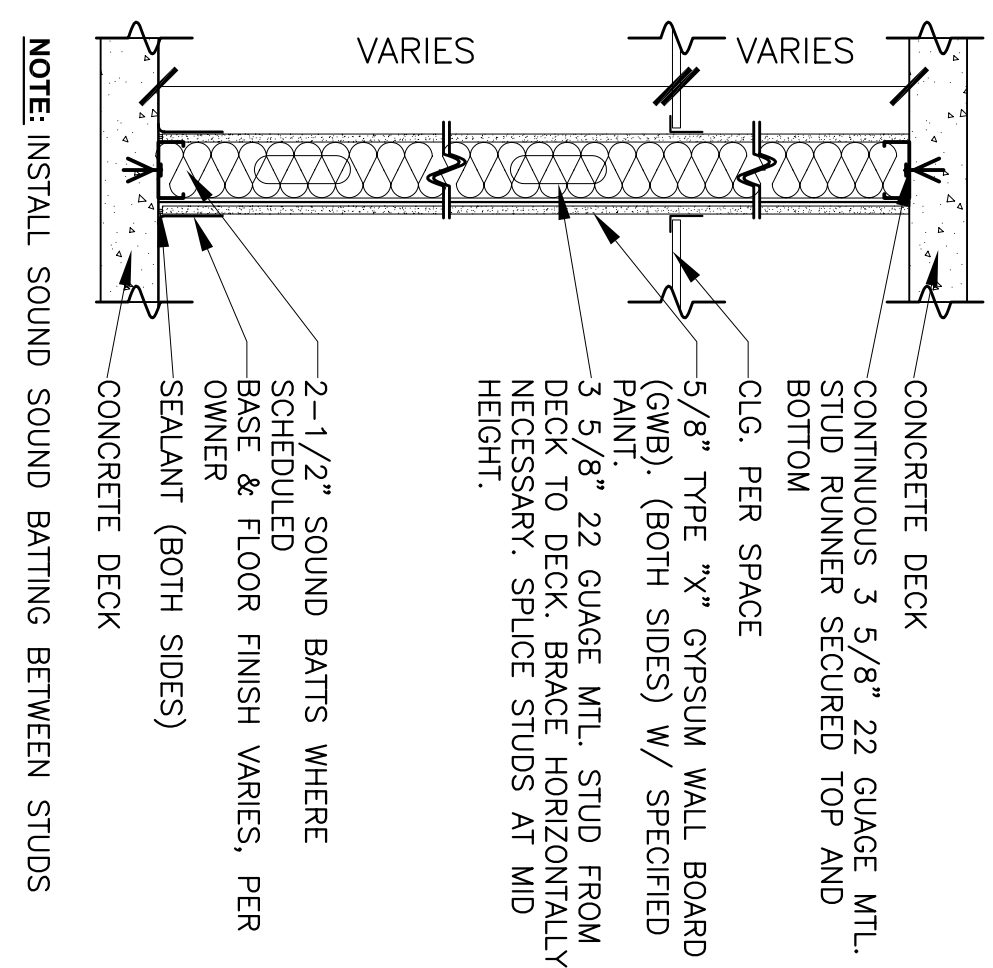
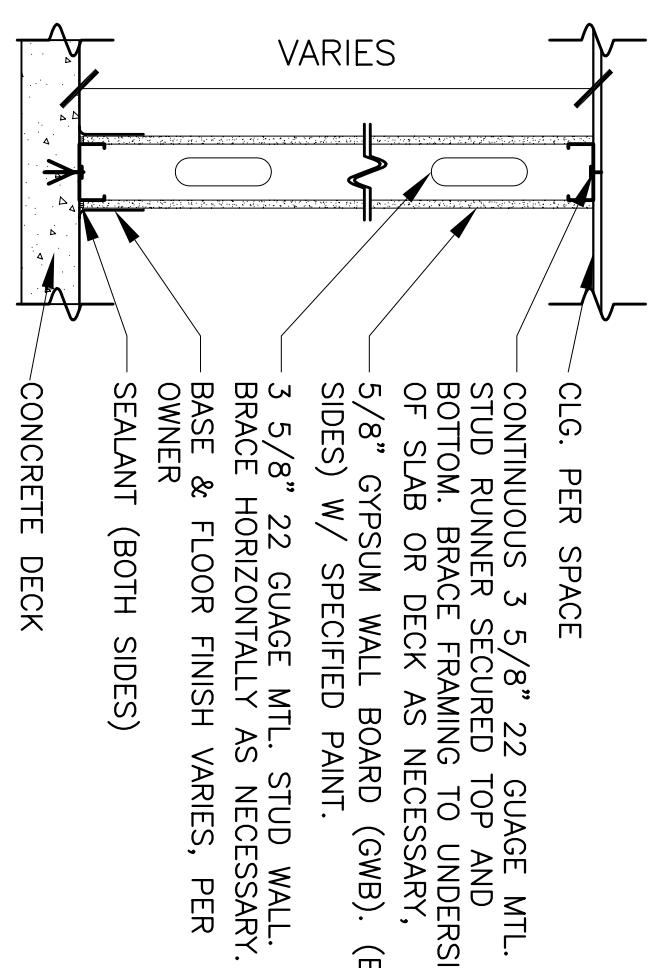


**REFLECTED CEILING PLAN - NEW CONSTRUCTION PLAN**  
SCALE: 3/8" = 1'-0"



**1**  
1-HR RATED DEMISING WALL SECTION \*  
A-1 SCALE 1" = 1'-0"  
UL #U465



**2**  
TYPICAL WALL SECTION  
A-1 SCALE 1" = 1'-0"

**\* NOTES ON DEMISING WALL**

- 1-HR RATED NON-LOAD-BEARING PARTITION (NLB)
- METAL STUD @ 16" O.C. (LUN). SIZE AS NOTED.
- ONE LAYER 5/8" TYPE "X" GYPSUM WALL BOARD (GWB) PR VENEER BASE APPLIED AT RIGHT ANGLES OR PARALLEL TO EACH FACE 24" O.C. WITH 1" TYPE "S" DRYWALL SCREWS 8" O.C. TO VERTICAL EDGES AND 12" O.C. TO TOP AND BOTTOM RUNNERS AND INTERMEDIATE STUDS. STAGGER ALL VERTICAL AND HORIZONTAL JOINTS 24" O.C. EACH SIDE AND OPPOSITE SIDES. BUILD TIGHT TO SEAL ALL ORIFICES, JOINTS, AND PENETRATIONS WITH UL RATED PRODUCTS.
- UL #465 INSULATED WITH 2 1/2" SOUND BATTS FOR SOUND CONTROL WHERE SCHEDULED.

**GENERAL NOTES:**

- 1. ALL PARTITIONS SHALL BE TAPED, BEDED, AND FINISHED TO A SMOOTH WALL TEXTURE, PAINTED WITH ONE PRIME COAT AND ONE FINISH COAT, AND ATTACHED TO METAL STUDS AND TOP AND BOTTOM RUNNERS.

<p><b>HUNTER McKELLIPS ASSOCIATES ARCHITECTS</b></p>	<p>408 W. UNIVERSITY AVE., 403 GAINESVILLE, FL 32601 WWW.HUNTERMCKELLIPS.COM PHONE: (352) 377-7501 PHONE: (352) 373-7501 FAX: (352) 374-4178 EMAIL: info@huntermckellips.com</p>
<p><b>PROJECT:</b> 2004.14</p>	<p><b>DATE:</b> 05.04.05</p>
<p><b>REVISIONS:</b> 00.00.00</p>	<p>SEAL:</p>

<p><b>seagle building - 2nd floor renovation</b> Floor Plan, area analysis, detail furniture plan per suite</p>
<p>408 West University Avenue, Suite 203, Gainesville, FL 32601</p>
<p>©2005 Hunter/McKellips/Associates/Architects, Inc. All rights reserved.</p>